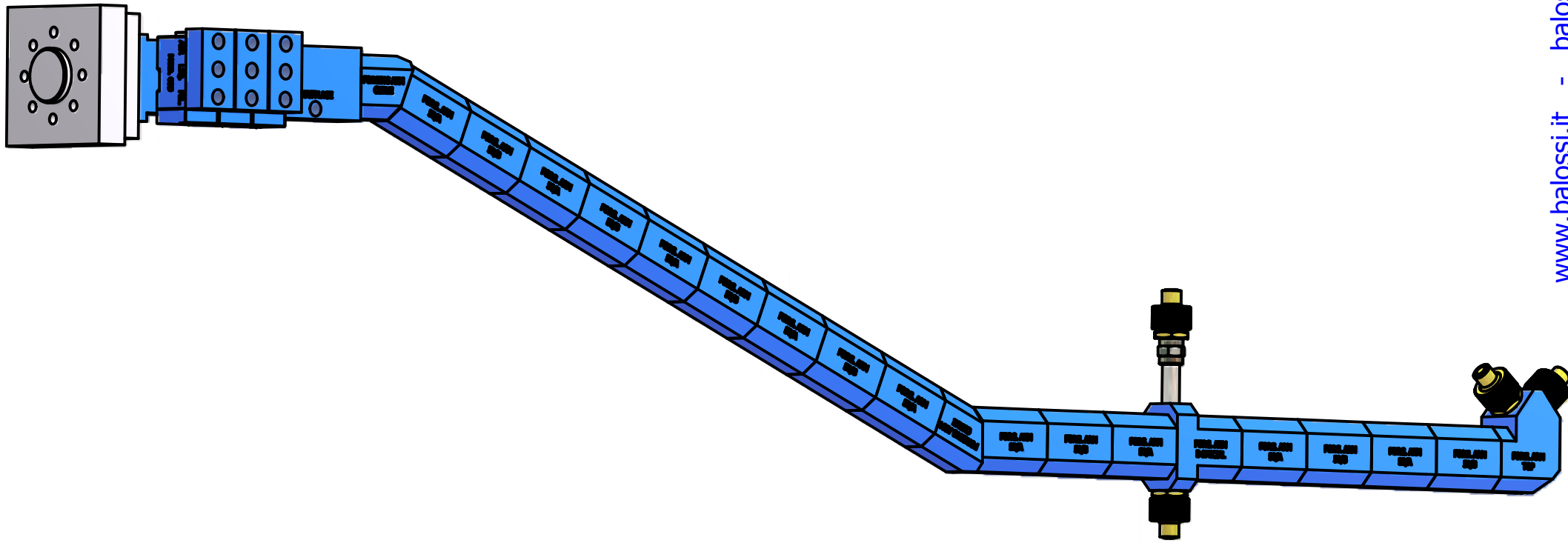
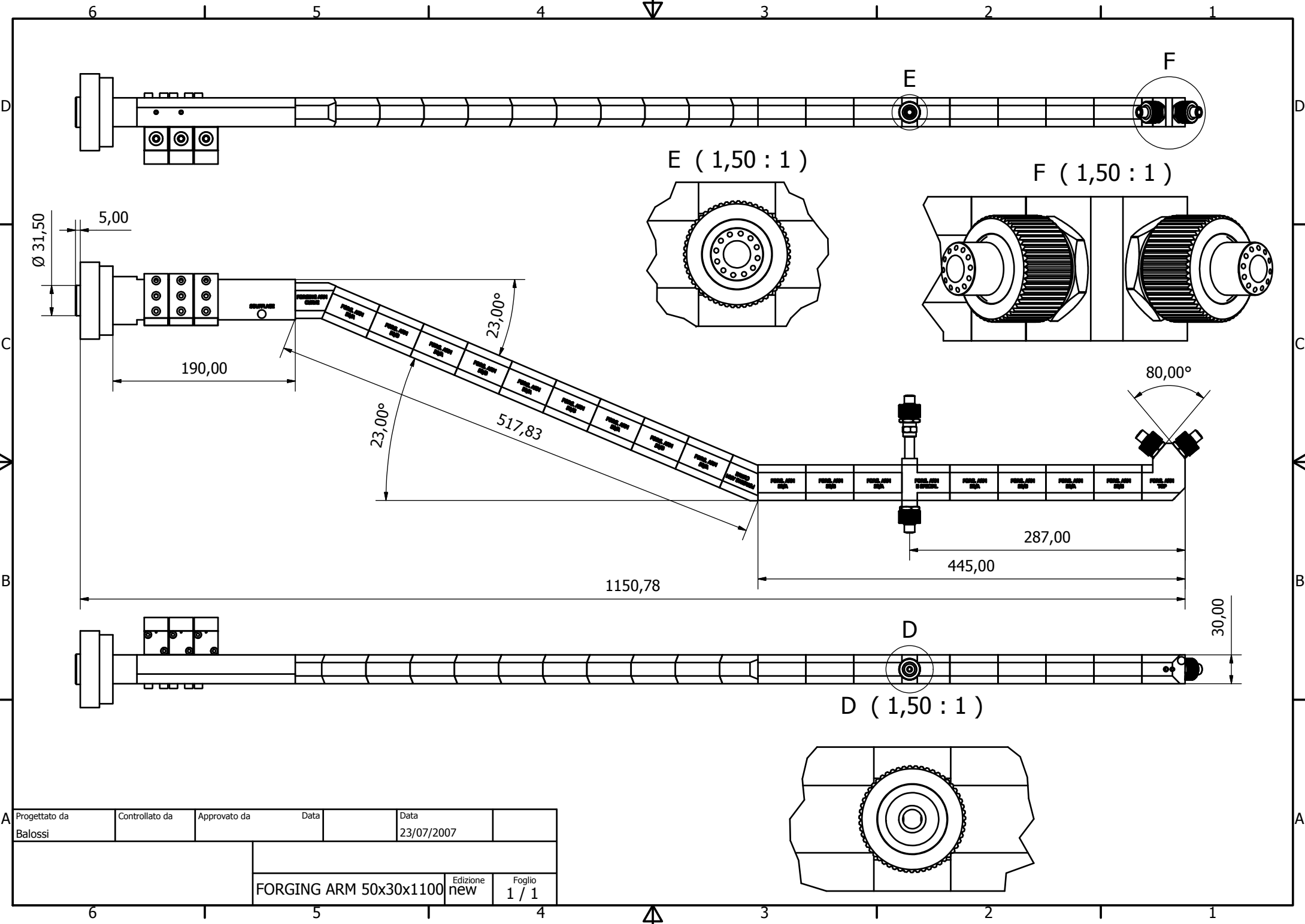


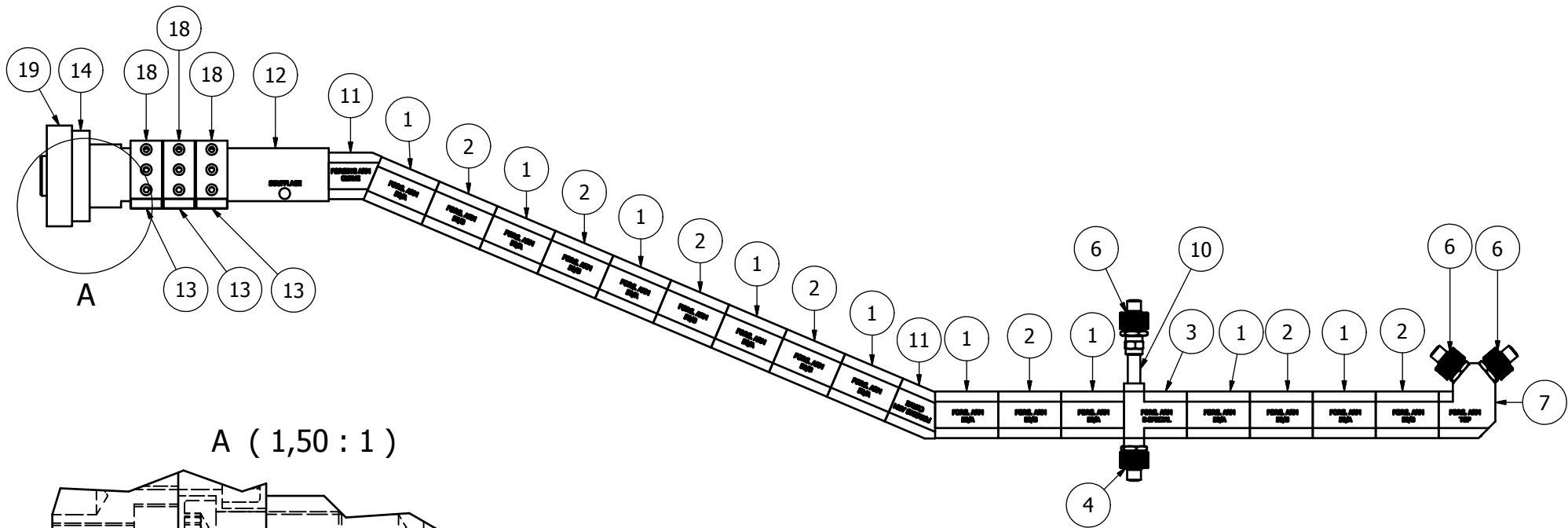
FORGING ARM 039/1100



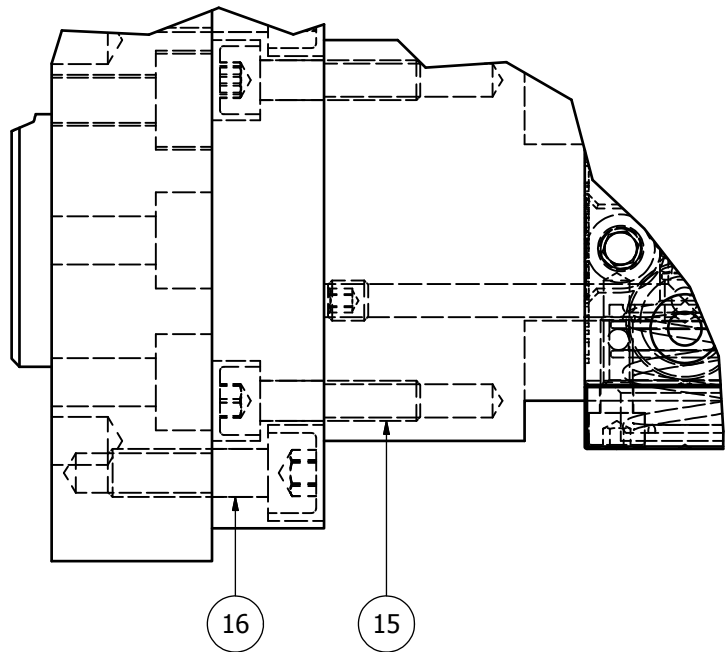
www.balossi.it - balossir1@numerca.it



Progettato da Balossi	Controllato da	Approvato da	Data	Data	
				23/07/2007	
FORGING ARM 50x30x1100			Edizione new	Foglio 1 / 1	



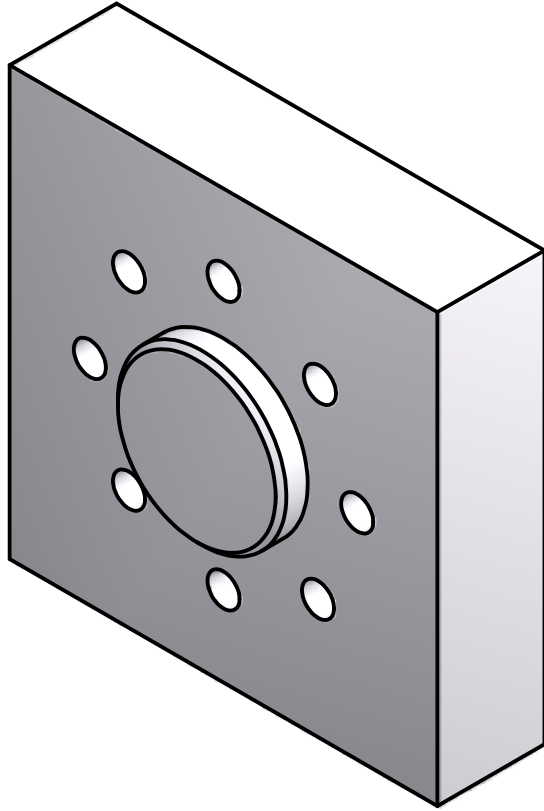
A (1,50 : 1)



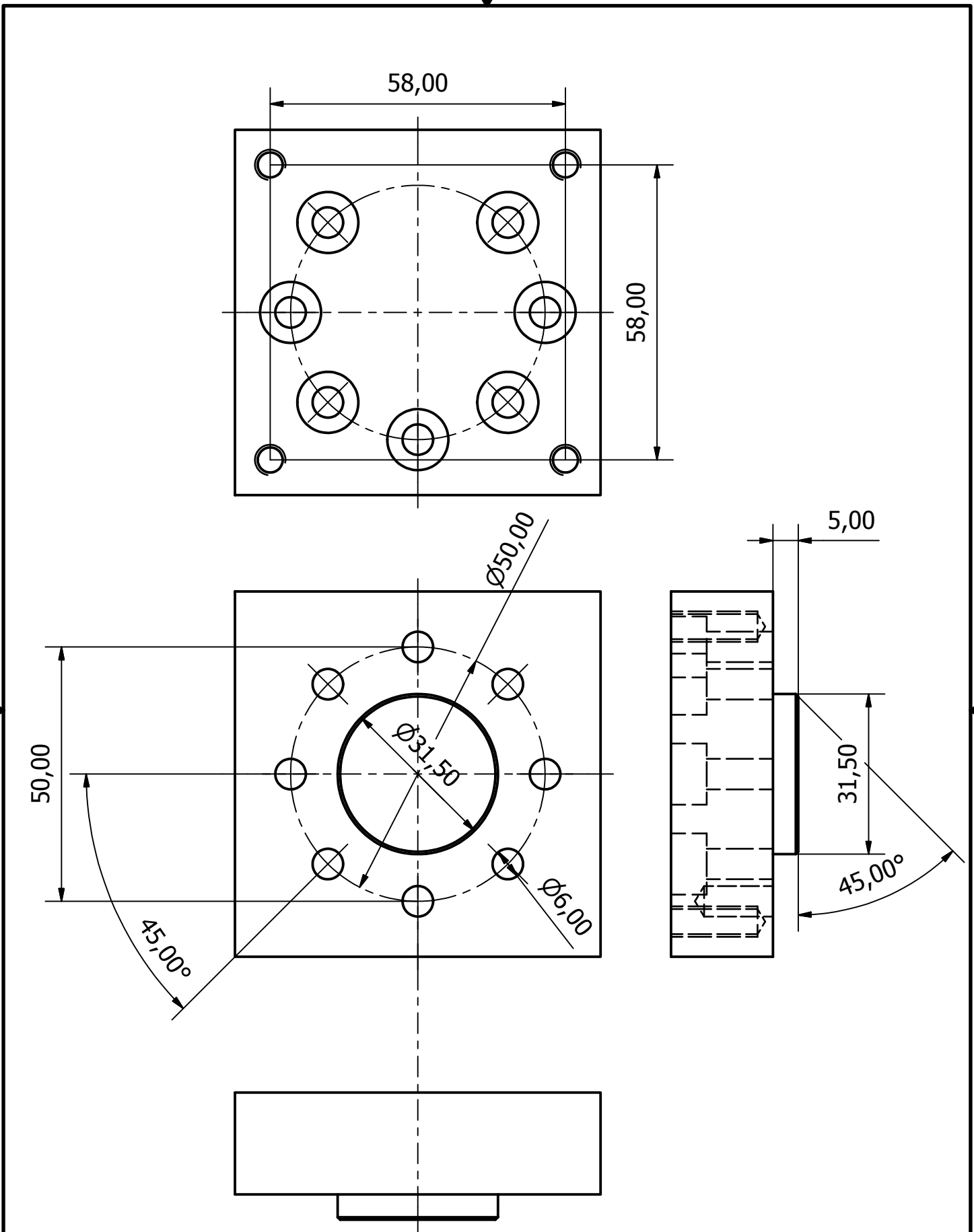
Elenco parti			
ELEMENTO	QTÀ	NUMERO PARTE	DESCRIZIONE
1	9	FORGING ARM 50-A	
2	7	FORGING ARM 50-B	
3	1	FORGING ARM 50-C	
4	1	TESTINA COMPL.1-8 JET M 4	
5	1	MANICOTTO 1-8	
6	3	TESTINA COMPLETA 1-8 JET 12-30°	
7	1	FORGING ARM TOP	
9	4	GRANO M5x5	
10	1	EXTENSION Ø 1-8 10x6x35	
11	2	FORGING ARM 50x30x1100mm secondo pezzo NEW	
12	1	FORGING ARM BOTTOM	
13	3	039 SENZA TEST&VITE	
14	1	CONTRPIASTRA x KUKA	
15	4	DIN 912 - M5 x 20	Vite a testa cilindrica
16	4	DIN 912 - M6 x 20	Vite a testa cilindrica
17	5	ANSI B18.3.1M - M5x0,8 x 65	Vite forgiata a testa incassata x Metrico
18	3	BASETTA 039 MONO	
19	1	PIASTRA x KUKA Ø 31,5	
20	2	ISO 4762 - M4 x 40	Vite con esagono incassato 1

Progettato da Balossi	Controllato da	Approvato da	Data	Data	
				21/02/2008	
			FORGING ARM 50x30x1100	Edizione new_	Foglio 1 / 1

FORGING ARM PLATE FOR KUKA Ø 31,5

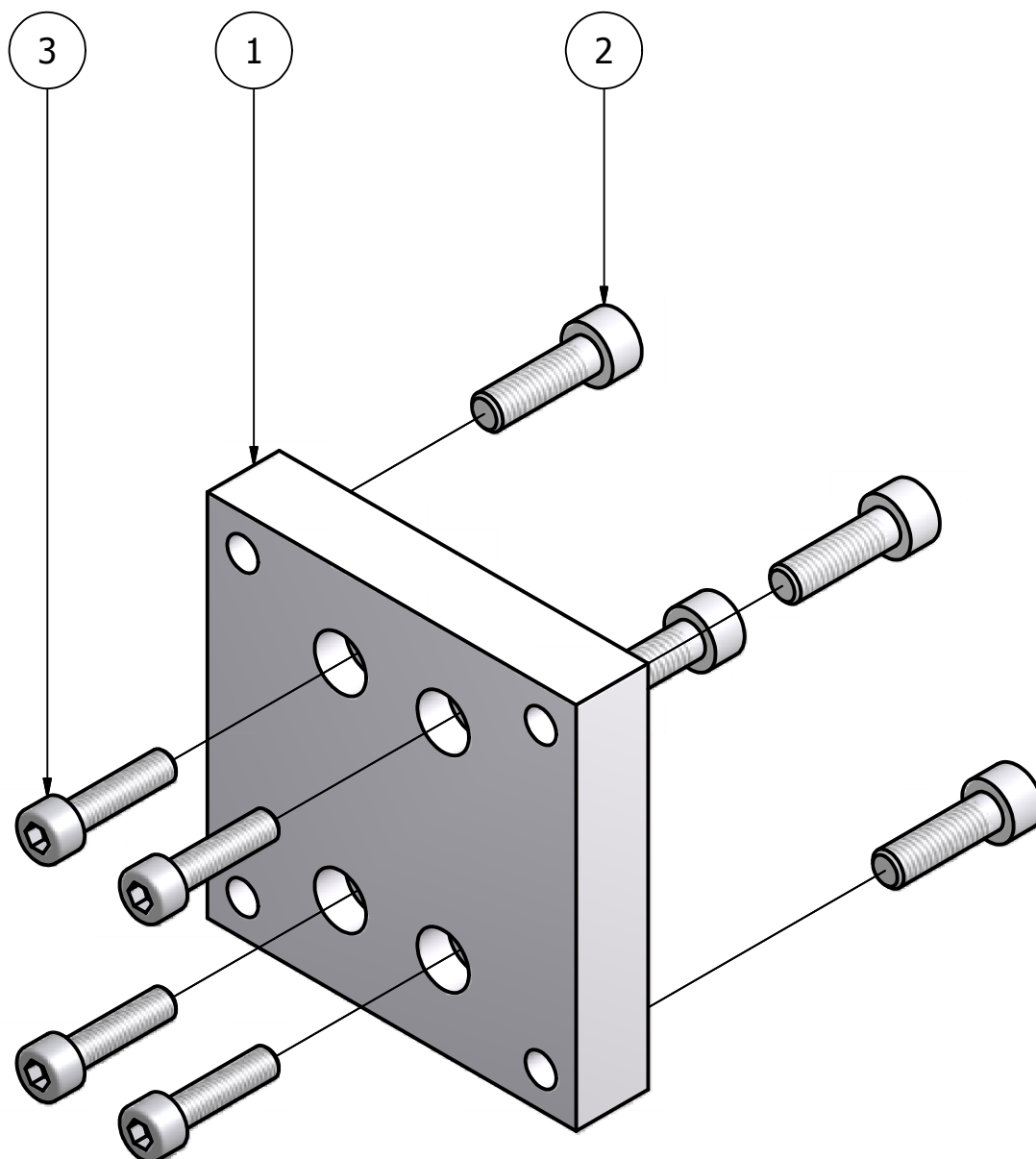


www.balossi.it - balossirl@numerica.it



Progettato da Balossi	Controllato da	Approvato da	Data	Data 04/09/07	
			PIASTRA x KUKA Ø31,5		
			Edizione	Foglio 1 / 1	

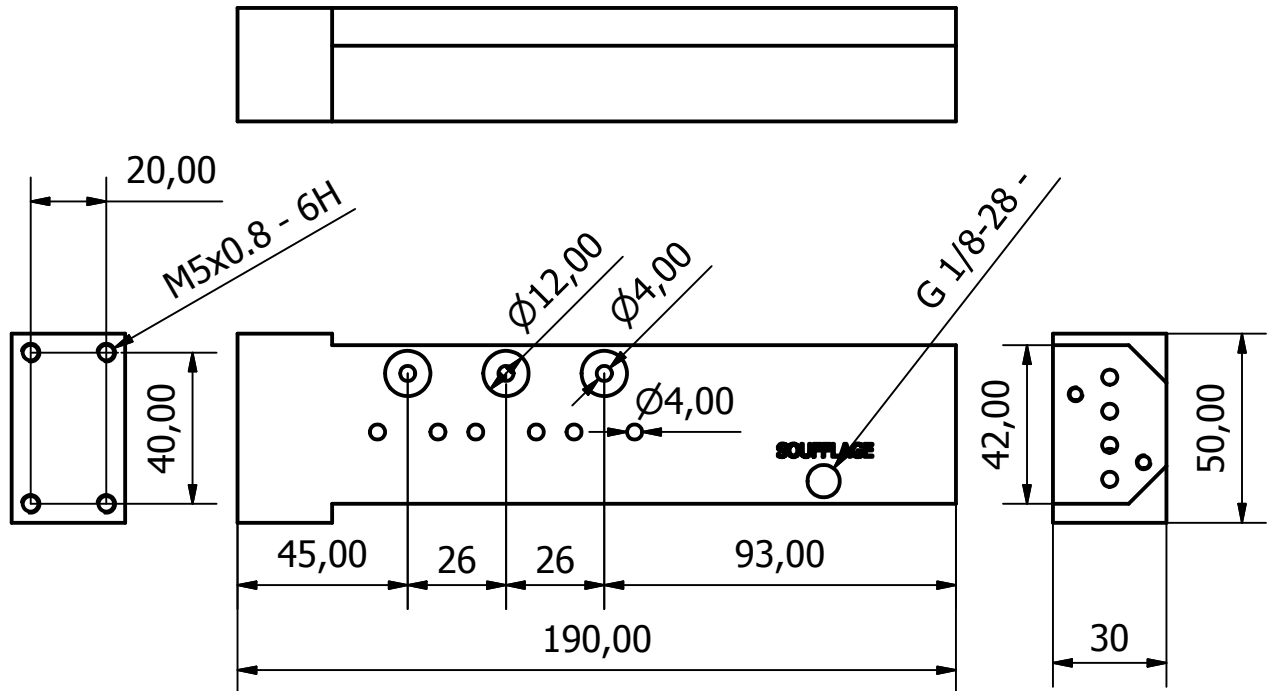
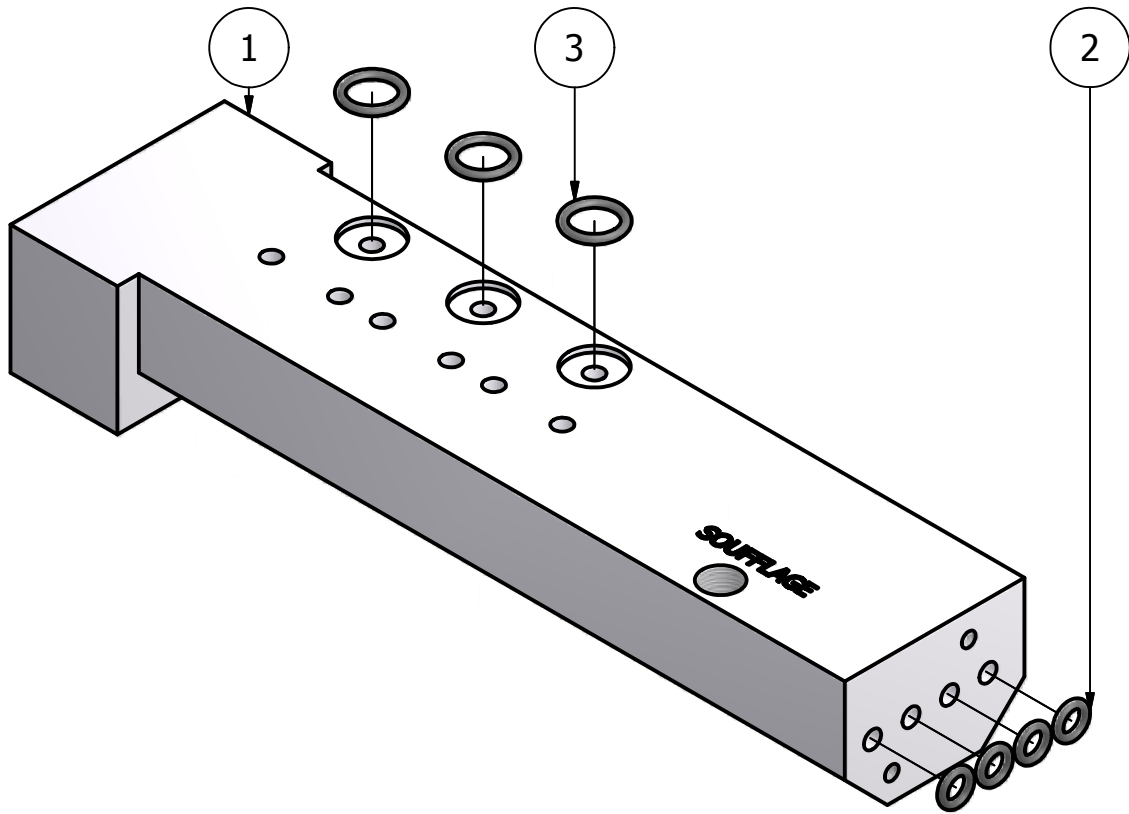
FORGING ARM SECOND PLATE



www.balossi.it - balossisrl@numerica.it

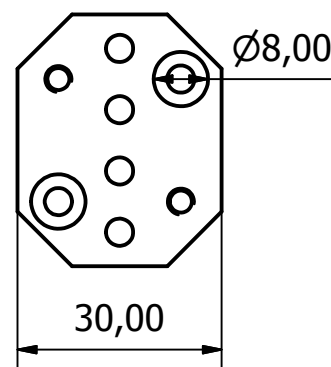
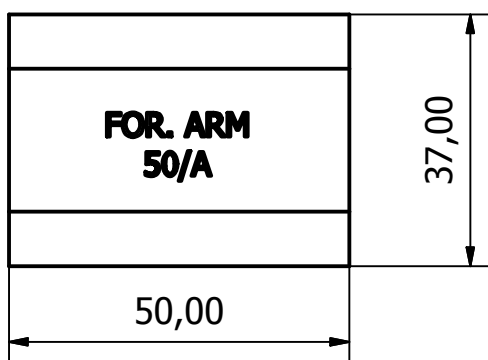
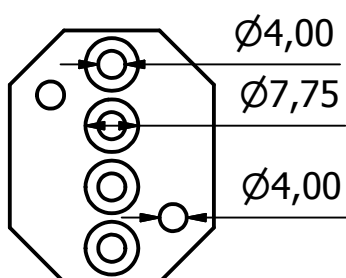
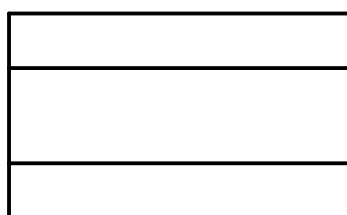
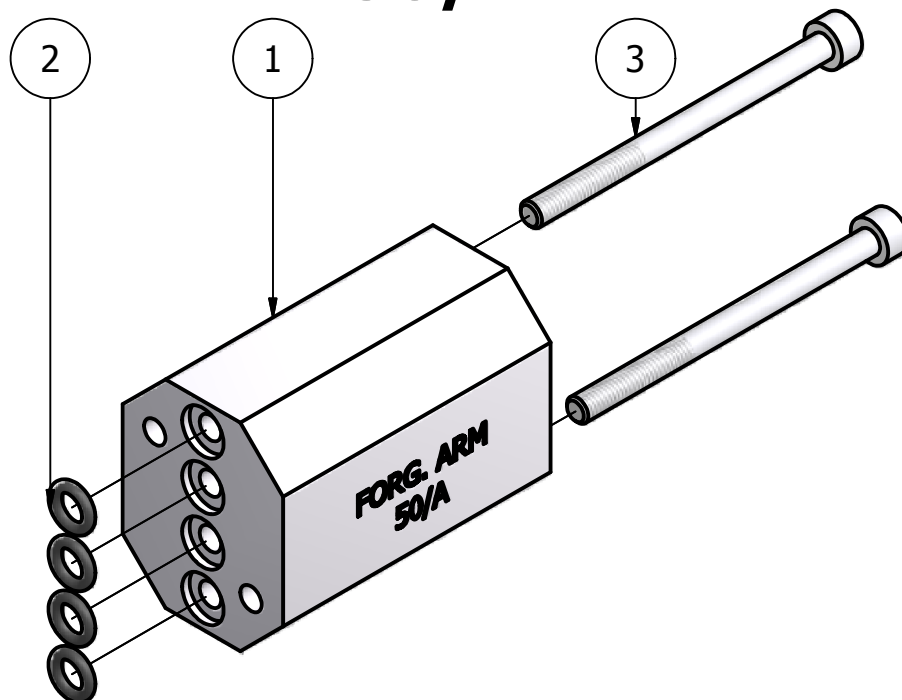
Elenco parti			
ELEMENTO	QTÀ	NUMERO PARTE	DESCRIZIONE
1	1	SECOND PLATE	
2	4	DIN 912 - M6 x 20	Vite a testa cilindrica
3	4	DIN 912 - M5 x 20	Vite a testa cilindrica

FORGING ARM - BOTTOM



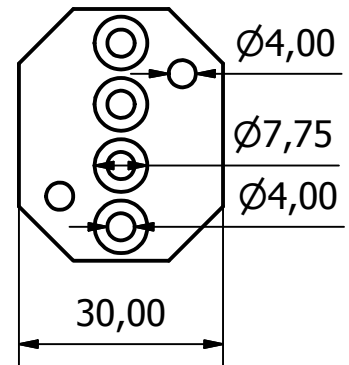
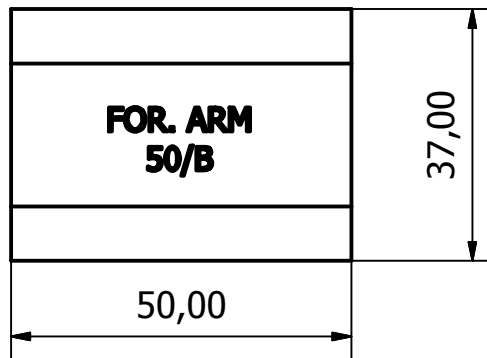
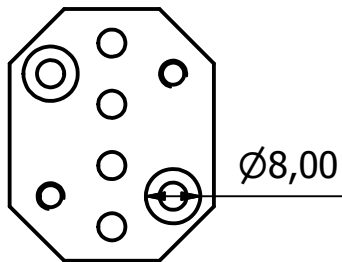
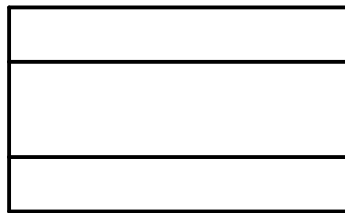
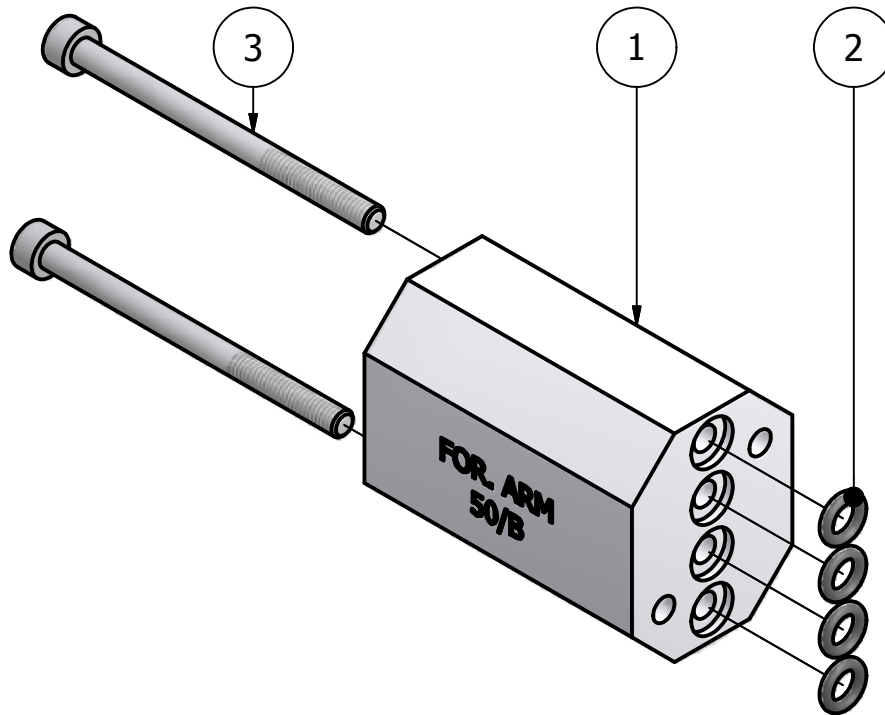
Elenco parti			
ELEMENTO	QTÀ	NUMERO PARTE	DESCRIZIONE
1	1	FORGING ARM BOTTOM	
2	4	O-Ring 2018 (3,68x1.78)	
3	3	O-Ring 108 (8,73x1.78)	
4	3	GRANO M5x5	

FORGING ARM 50/A



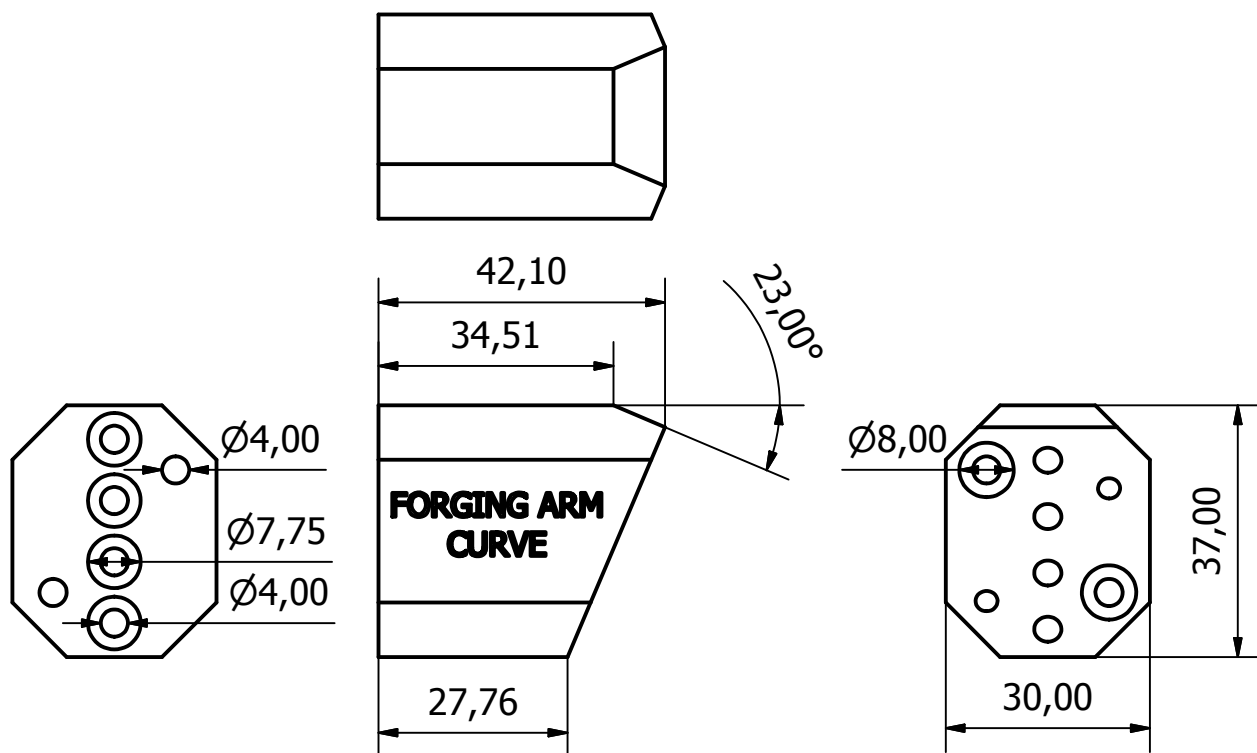
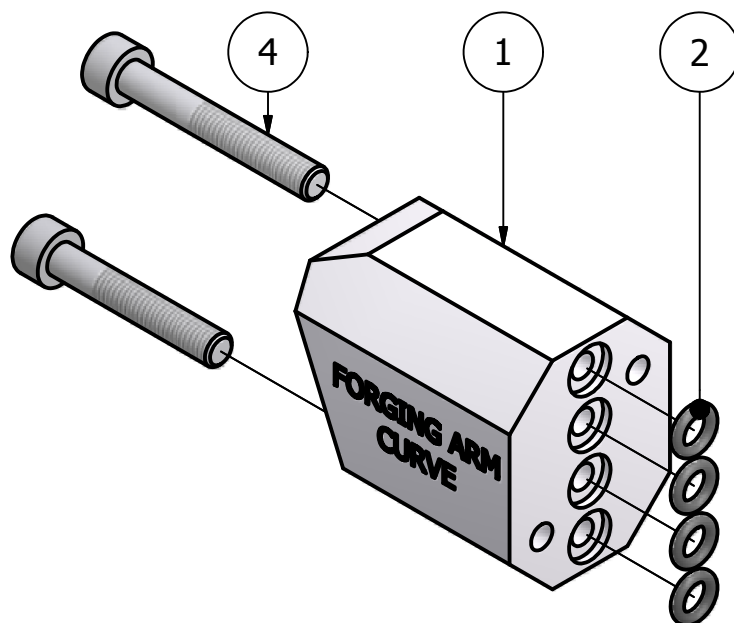
Elenco parti			
ELEMENTO	QTÀ	NUMERO PARTE	DESCRIZIONE
1	1	FORGING ARM 50-A	
2	4	O-Ring 2018 (3,68x1.78)	
3	2	ANSI B18.3.1M - M4x0.7 x 55	Vite forgiata a testa incassata x Metrico

FORGING ARM 50/B



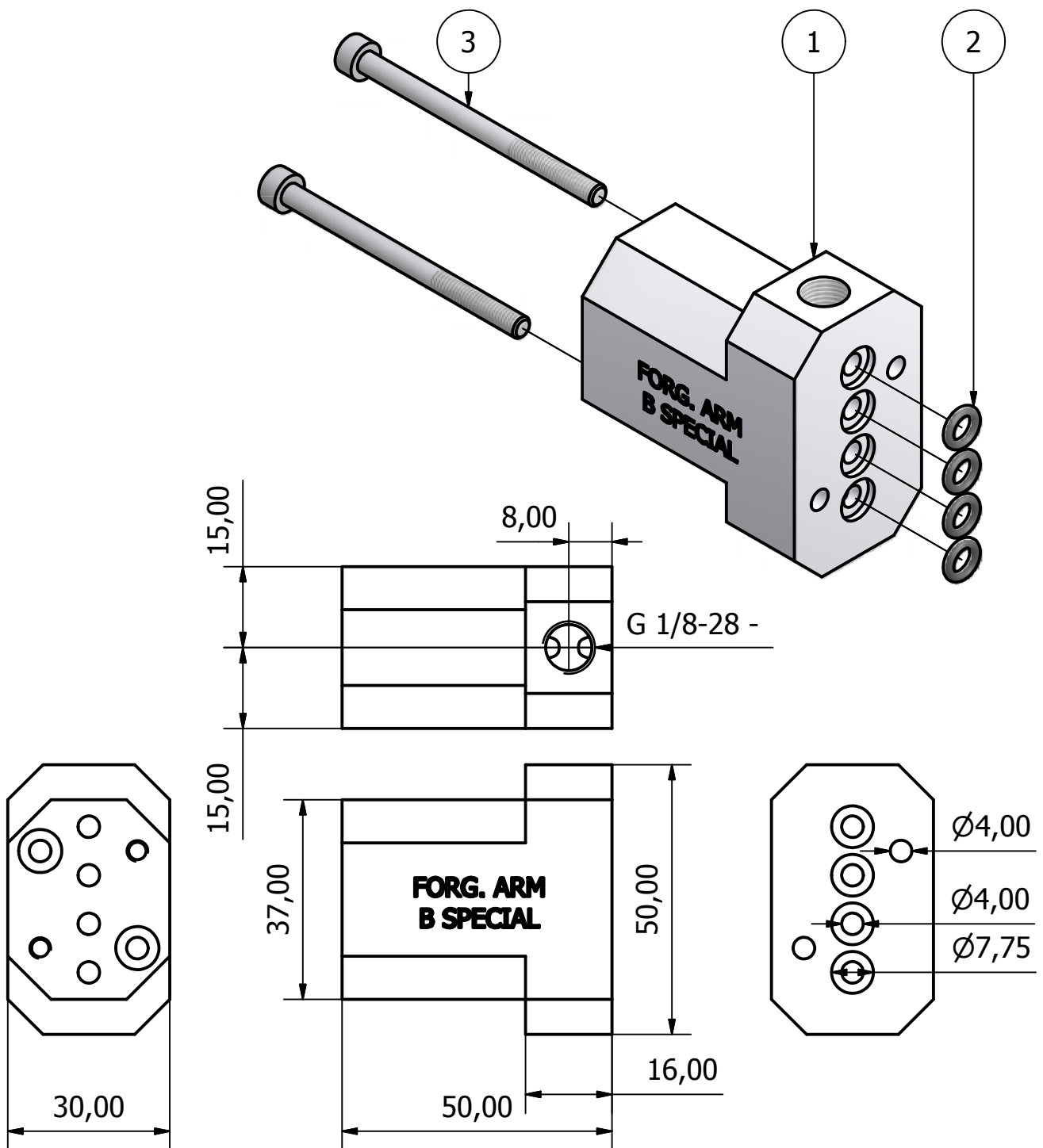
Elenco parti			
ELEMENTO	QTÀ	NUMERO PARTE	DESCRIZIONE
1	1	FORGING ARM 50-B	
2	4	O-Ring 2018 (3,68x1.78)	
3	2	ANSI B18.3.1M - M4x0.7 x 55	Vite forgiata a testa incassata x Metrico

FORGING ARM - CURVE



Elenco parti			
ELEMENTO	QTÀ	NUMERO PARTE	DESCRIZIONE
1	1	FORGING ARM 50x30x1100mm secondo pezzo NEW	
2	4	O-Ring 2018 (3,68x1.78)	
3	1	DIN 912 - M5 x 30	Vite a testa cilindrica
4	1	DIN 912 - M5 x 35	Vite a testa cilindrica

FORGING ARM 50 B SPECIAL

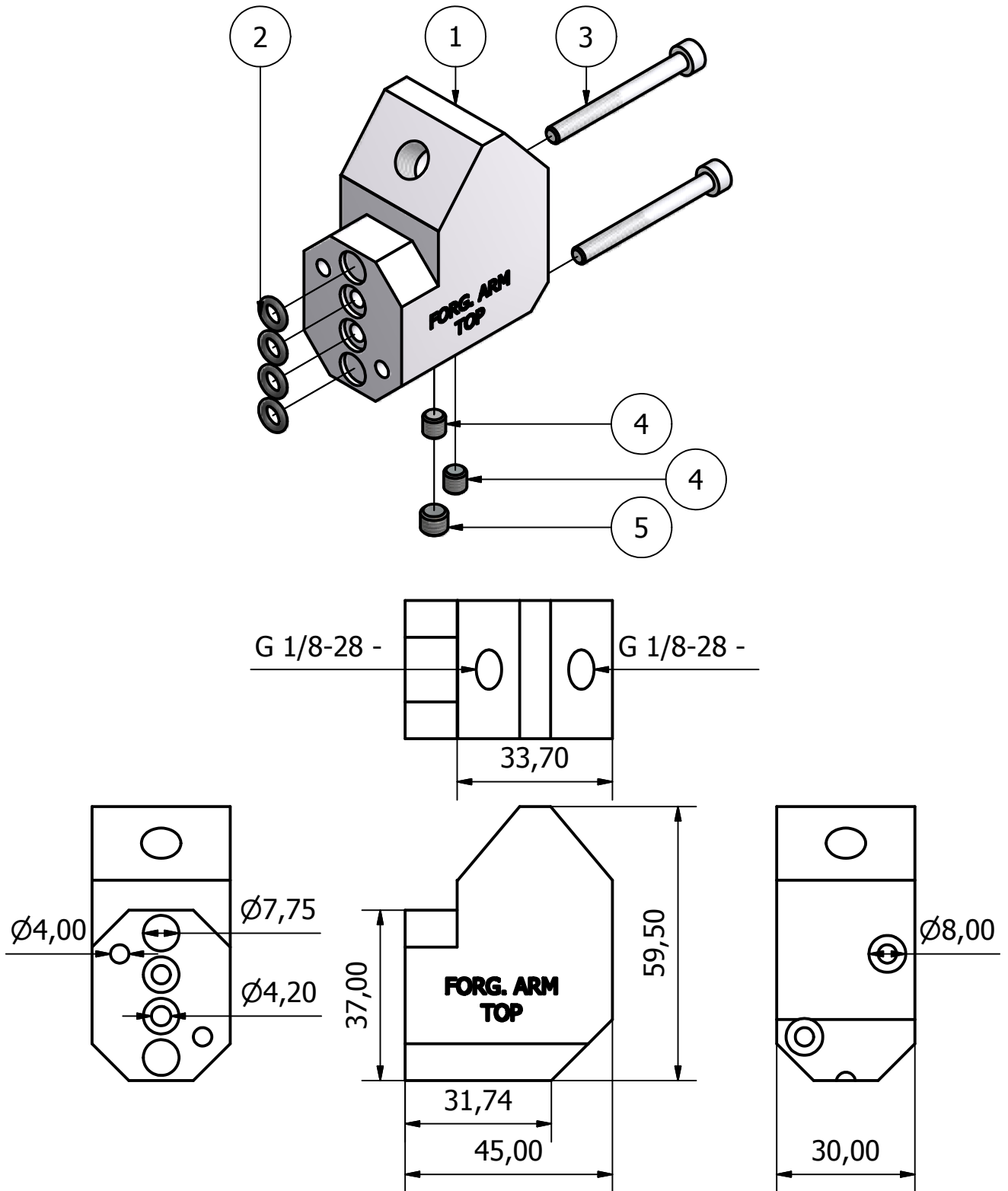


www.balossi.it - balossisrl@numERICA.it

Elenco parti

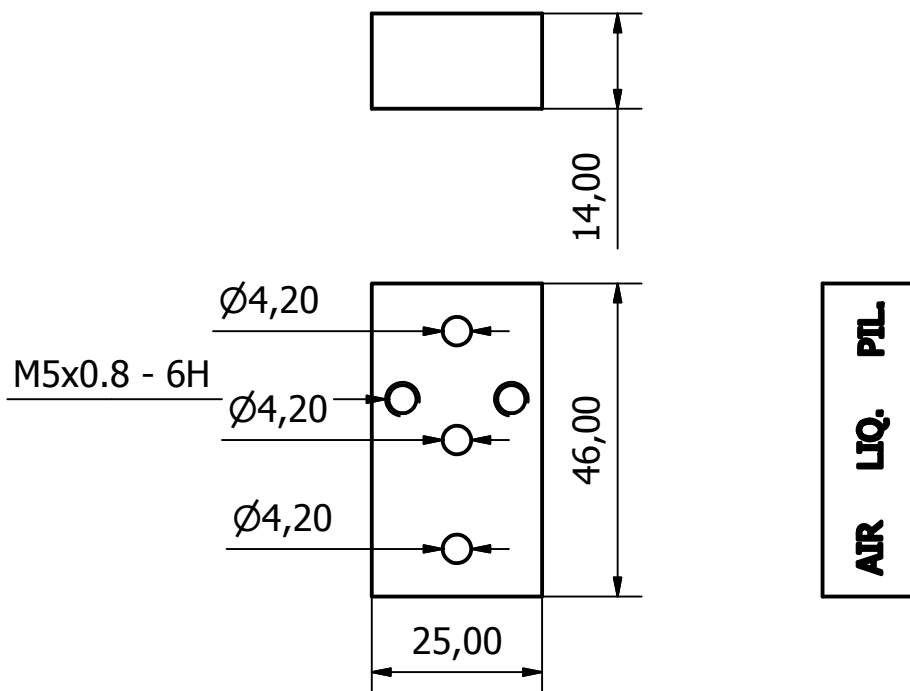
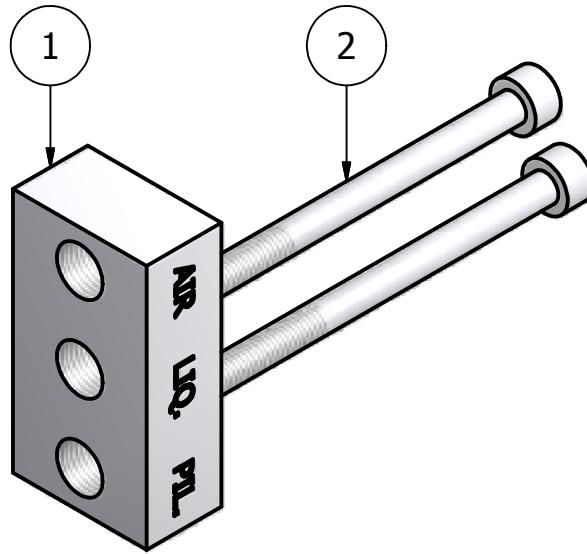
ELEMENTO	QTÀ	NUMERO PARTE	DESCRIZIONE
1	1	FORGING ARM 50 B SPECIAL	
2	4	O-Ring 2018 (3,68x1.78)	
3	2	ANSI B18.3.1M - M4x0.7 x 55	Vite forgiata a testa incassata x Metrico

FORGING ARM - TOP



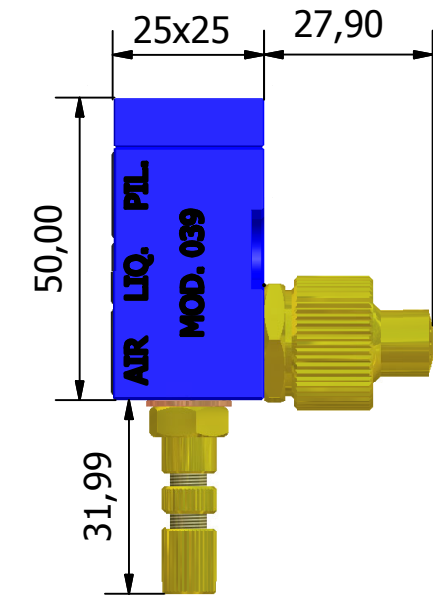
Elenco parti			
ELEMENTO	QTÀ	NUMERO PARTE	DESCRIZIONE
1	1	FORGING ARM TOP	
2	4	O-Ring 2018 (3,68x1.78)	
3	2	DIN 912 - M4 x 40	Vite a testa cilindrica
4	2	GRANO M5x5	
5	1	GRANO M6x5	

FORGING ARM BASETTA MONO

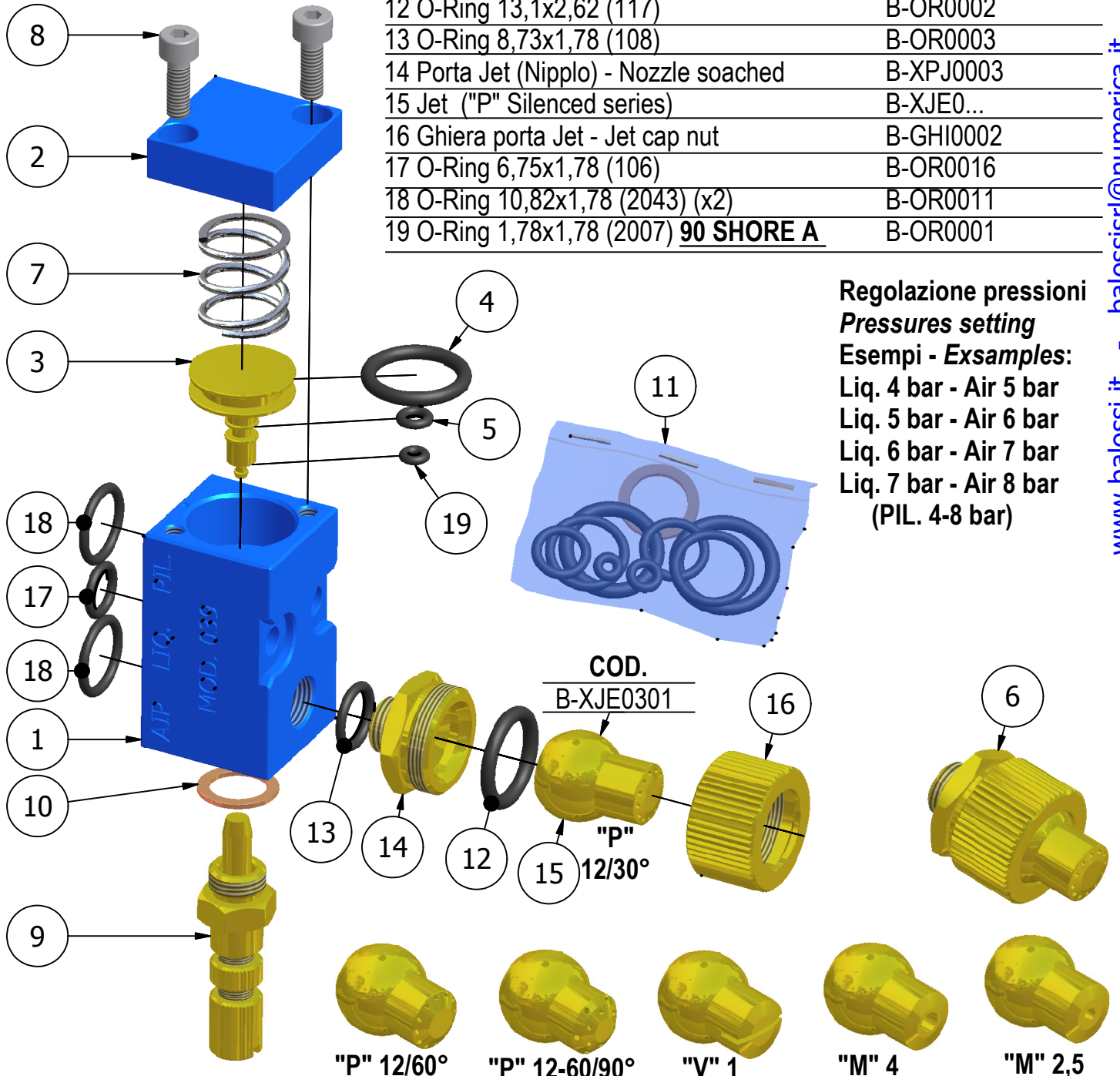


Elenco parti			
ELEMENTO	QTÀ	NUMERO PARTE	DESCRIZIONE
1	1	BASETTA 039 MONO	
2	2	ANSI B18.3.1M - M5x0,8 x 65	Vite forgiata a testa incassata x Metrico

MOD. 039 diecastig nozzles series



DESCRIZIONE-DESCRIPTION	COD.
1 Corpo - Body	B-SA1200-GR
2 Fondello - End cap	B-XFS0011
3 Pistone - Piston (4-5-19-inclusi-enclused)	B-XPI0001
4 O-Ring 13,95x2,62 (3056)	B-OR0009
5 O-Ring 2,9x1,78 (2012)	B-OR0008
6 Testina C.-Complete H.(12+13+14+15+16)	B-XTC0...
7 Molla - Spring	B-MOL0003
8 Vite fondello - End cap screw (M4x12) (x2)	B-VIT0030
9 Vite reg. liquido - Liq.setting screw	B-XVR0003
10 Rond. rame - Copper washer (14x10x1)	B-RON0004
11 Kit O-Rings	B-XKI0006
12 O-Ring 13,1x2,62 (117)	B-OR0002
13 O-Ring 8,73x1,78 (108)	B-OR0003
14 Porta Jet (Nipplo) - Nozzle soached	B-XPJ0003
15 Jet ("P" Silenced series)	B-XJE0...
16 Ghiera porta Jet - Jet cap nut	B-GHI0002
17 O-Ring 6,75x1,78 (106)	B-OR0016
18 O-Ring 10,82x1,78 (2043) (x2)	B-OR0011
19 O-Ring 1,78x1,78 (2007) 90 SHORE A	B-OR0001



Regolazione pressioni
Pressures setting
Esempi - Exsamples:
 Liq. 4 bar - Air 5 bar
 Liq. 5 bar - Air 6 bar
 Liq. 6 bar - Air 7 bar
 Liq. 7 bar - Air 8 bar
 (PIL. 4-8 bar)

COD.	B-XJE0301	16	6		
	"P" 12/30°				
	"P" 12/60°				
	"P" 12-60/90°				
	"V" 1				
	"M" 4				
	"M" 2,5				
COD.:	B-XJE0302	B-XJE0303	B-XJE0201	B-XJE0103	B-XJE0101